

Thanks for your order.

Here's the Blue Store download (just scroll down).

You don't need to change anything if you want HO scale.

For N scale, reduce by 54%

For O scale, increase by 181%.

For G scale you'll need a bigger printer than a desktop printer - any office stationers like Kinkos will be able to help.

Here's what the Blue store looks like built – it's just a basic box, but by making several you really can have it with it:



And here's the youtube with the step by step instructions:

<https://youtu.be/NAGqyOpV5r0>

Don't forget to send me your layout pics – with or without the store.

Best

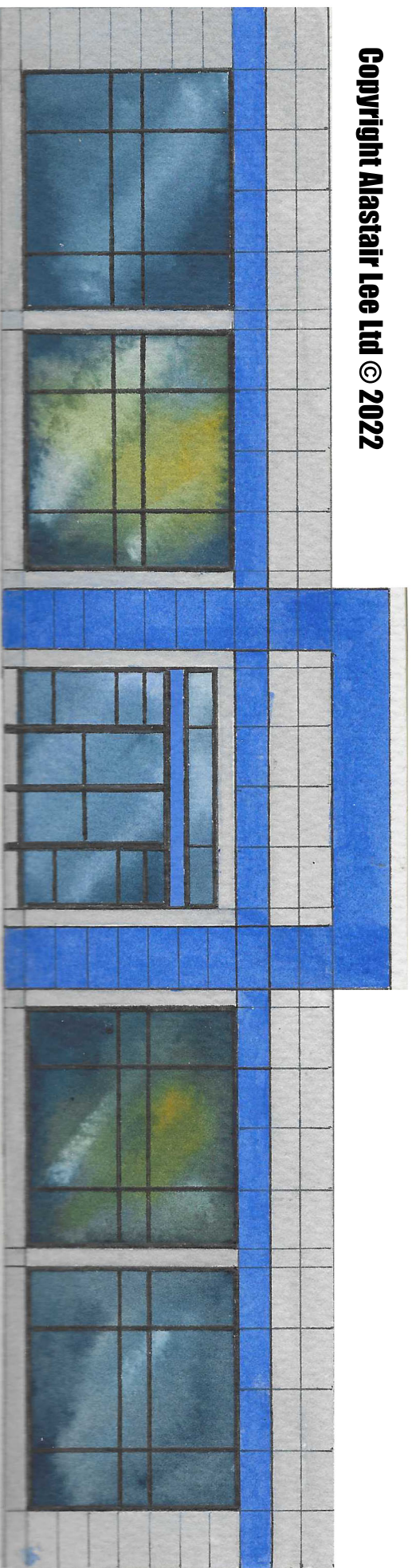
Al

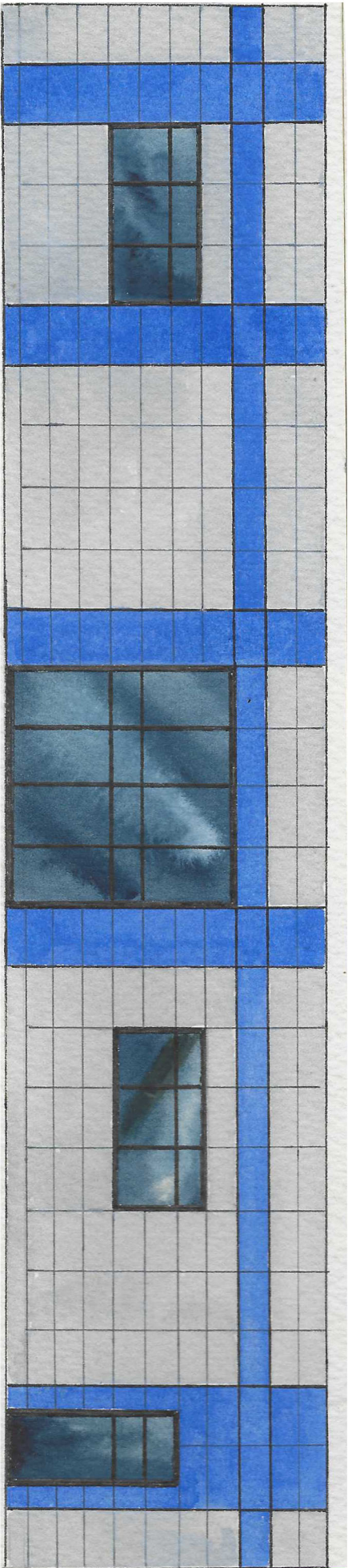
Scroll down and see what else you can make with the blue store, using some of the brick from the other prints:



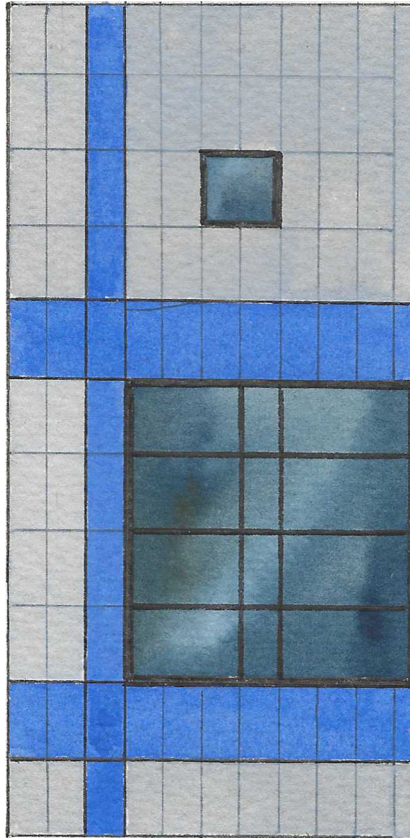
You are only limited by your imagination...

Copyright Alastair Lee Ltd © 2022

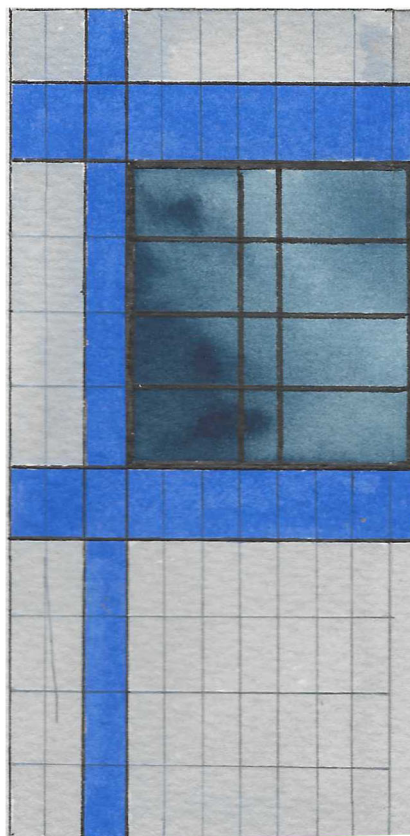




Copyright Alastair Lee Ltd © 2022



Copyright Alastair Lee Ltd © 2022



Copyright Alastair Lee Ltd © 2022

